

# พม่าดา

พระนิพนธ์ใน สมเด็จพระเจ้าฟ้าบรมพิตรสุริยมนตรี

ส่วนขึ้น ท่อน ๑

6

12

18

25

30

36

43

51

58

65

69

ທາວຣາ  
Cornet in B♭ 2



ចតុរាជ  
Cornet in B♭ 2



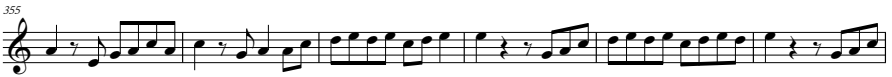
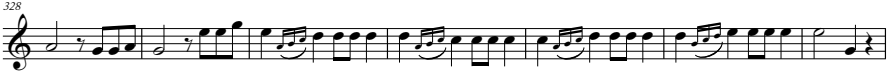
ចំរាប់  
Cornet in B♭ 2





ចំរៀង  
Cornet in B♭ 2

6



8

พม่าตา  
Cornet in B♭ 2

ส่วนขึ้น ท่อน ๒

6

11

16

21

26

31

35

39

6

พม่าตา  
Cornet in B♭ 2

ส่วนขึ้น ท่อน ๓

6

11

16

21

27

33

39

ส่วนขึ้น ท่อน ๔

5

10

15



ພູມາຕາ  
Cornet in B♭ 2



ສາມອັນ ກ່ອນ ຂ



ພມ່າຕາ  
Cornet in B♭ 2

ສ່ວນ ຕົວ ໑

7

11

16

21

25

29

35

42

49

54





ທຸງຮາ  
Cornet in B♭ 2



ພາວາ  
Cornet in B $\flat$  2

ສ່ວນ ກ່ອນ ໓



ສ່ວນ ກ່ອນ ໔



ສ່ວນ ກ່ອນ ໕



ພູມາຕາ  
Cornet in B♭ 2

ສິມພອນ ກຸມ ๑

Musical score for Cornet in B♭ 2, measures 1-72. The score is written in treble clef with a key signature of one flat (B♭). The tempo/mood is marked 'Allegretto'.

Measures 1-8: 4/4 time, starting with a quarter rest, followed by quarter notes G4, A4, B4, C5, B4, A4, G4, F4, E4, D4, C4.

Measures 9-15: 4/4 time, starting with a quarter rest, followed by quarter notes G4, A4, B4, C5, B4, A4, G4, F4, E4, D4, C4.

Measures 16-22: 4/4 time, starting with a quarter rest, followed by quarter notes G4, A4, B4, C5, B4, A4, G4, F4, E4, D4, C4.

Measures 23-28: 4/4 time, starting with a quarter rest, followed by quarter notes G4, A4, B4, C5, B4, A4, G4, F4, E4, D4, C4.

Measures 29-35: 4/4 time, starting with a quarter rest, followed by quarter notes G4, A4, B4, C5, B4, A4, G4, F4, E4, D4, C4.

Measures 36-40: 4/4 time, starting with a quarter rest, followed by quarter notes G4, A4, B4, C5, B4, A4, G4, F4, E4, D4, C4.

Measures 41-45: 4/4 time, starting with a quarter rest, followed by quarter notes G4, A4, B4, C5, B4, A4, G4, F4, E4, D4, C4. Includes first and second endings.

Measures 46-52: 4/4 time, starting with a quarter rest, followed by quarter notes G4, A4, B4, C5, B4, A4, G4, F4, E4, D4, C4.

Measures 53-57: 4/4 time, starting with a quarter rest, followed by quarter notes G4, A4, B4, C5, B4, A4, G4, F4, E4, D4, C4.

Measures 58-62: 4/4 time, starting with a quarter rest, followed by quarter notes G4, A4, B4, C5, B4, A4, G4, F4, E4, D4, C4.

Measures 63-68: 4/4 time, starting with a quarter rest, followed by quarter notes G4, A4, B4, C5, B4, A4, G4, F4, E4, D4, C4.

Measures 69-72: 4/4 time, starting with a quarter rest, followed by quarter notes G4, A4, B4, C5, B4, A4, G4, F4, E4, D4, C4. Includes first and second endings.

ចតុរាង  
Cornet in B♭ 2







ພມ່າຕາ  
Cornet in B $\flat$  2

ສິ້ນຜົວ ກ່ອນ ໒



ສິ້ນຜົວ ກ່ອນ ໓



ສິ້ນຜົວ ກ່ອນ ໔



ສິ້ນຜົວ ກ່ອນ ໔

